



**468. Chupicuaro Miniature Figures & Mini Head Pots (4)**

Chupicuaro, Mexico.  
Ca. 400-100 B.C.  
1 - 3-3/4" H.

Collection of Albert J. and Monique Grant, NYC., acquired 1950s-1960s.  
Item #s ZA6, ZA5, AB1 & 9-6.

Four polychrome decorated pottery examples including two seated figures, one holding her hands behind her head, the other with left hand behind her head and right hand to her mouth. Both decorated with black and white painted geometric stepped designs. Some minor paint losses, otherwise both are intact. Together with two miniature polychrome painted head pots, one depicted with faces on both sides. Both depicted with simple relief facial features. Intact.

Est. \$1,000-\$1,500

Closing: Wednesday, May 24th, 11:00 A.M.



**469. Olmecoid & Tlatilco Heads, Chupicuaro & Michoacan Figures (5)**

Mexico.  
Ca. 1100-100 B.C.  
1-1/2 - 3-1/4"H.

Collection of Albert J. and Monique Grant, NYC., acquired 1950s-1960s.  
Item #s 1768 and no #s.

Five different pottery examples including a Chupicuaro miniature seated male and female couple, arms around their backs. Intact. Together with two different standing female figures, some traces of black, red and white highlights. The smaller figure has some loss to the left side of her hairdo, otherwise both are intact. Finally, an Olmec and Tlatilco head originally from figures, some remaining traces of red and other pigment highlights. Both mounted on old custom hardwood bases.

Est. \$1,000-\$1,500

Closing: Wednesday, May 24th, 11:02 A.M.



**472. Four Shell Ornaments, Shell Ring & Stone Monkey (6)**

Mexico.  
Ca. 400 B.C.-250 A.D.  
1 - 2-1/4"L.

Collection of Albert J. and Monique Grant, NYC., acquired 1950s-1960s. Six different carved stone and shell examples, including a shell ring decorated with two stylized skulls. A carved shell pendant amulet depicting a standing female figure holding both hands on her stomach. A carved shell zoomorph having a long tapered snout, perforated through the body. A carved stone striding zoomorph amulet. A small carved shell face pendant, perforated in the rim for suspension, open edge on perforation. Finally, a carved stone seated anthropomorphic figure, playing a flute. Perforated through the hairdo. Right foot reattached, weathered surface, otherwise intact.

Est. \$700-\$1,000

Closing: Wednesday, May 24th, 11:08 A.M.



**473. Colima Pottery Head Vessels (2)**

Colima, Mexico.  
Ca. 100 B.C. - 250 A.D.  
5-1/2"H. & 5"H., 5-7/8" rim diameter.

Private Nevada collection, acquired late 1990s. Ex. Dr. David Harner collection, Arkansas, 1950s-1960s, collection # M104 & M326. Exhibited at the Marjorie Barrick Museum, UNLV, 1990s.

Including a redware Tecoman type head bowl, having an incised three part hairdo, long restored hairline from rim through the base and a shorter hairline from the rim, otherwise intact. Together with a two-tone orangeware pottery head vessel depicting a shaman with a horn in the center of his forehead. Strong encrustation and mineral deposits on the surface. Intact.

Est. \$750-\$1,000

Closing: Wednesday, May 24th, 11:10 A.M.



**470. Chupicuaro Bowls & Ollas (4)**

Chupicuaro, Mexico.  
Ca. 400-100 B.C.  
2- 4-1/2"H.

Private Nevada collection, ex. Dr. David Harner collection, Arkansas, 1950s-1960s. Collection #CH.87; V.23.

Four different decorated pottery vessels, depicting a small bulbous bodied vessel having a basket type handle, red on cream large diamond pattern. Intact. Together with an ovoid bowl having a pointed rim, decorated with a painted red net pattern. Intact. A tripod bowl decorated with a diamond pattern. Intact. Finally, a bowl decorated with a crudely painted cross hatched pattern, red on cream. Stable hairline from rim and a minor rim chip, otherwise intact.

Est. \$300-\$500

Closing: Wednesday, May 24th, 11:04 A.M.



**471. Tlatilco Heads & Bust (3)**

Tlatilco, Mexico.  
Ca. 1100-550 B.C.  
1-1/2 - 3-1/4"H.

Estate of Hannelore Schulhof, collection of Rudolph B. and Hannelore B. Schulhof, Kings Point, NY, 1950s-1970s.

Pottery examples including a medium brown Tlatilco female bust having a fancy textured hairdo with long braids. Scattered strong surface deposits. Together with two different Tlatilco solid pottery heads, originally from figures. Both with lucite cube bases.

Est. \$500-\$800

Closing: Wednesday, May 24th, 11:06 A.M.



**474. Archaic Colima Gingerbread Figures (4)**

Colima, Mexico.  
Ca. 100 B.C.  
7 - 8"H.

Private Nevada collection, ex. Dr. David Harner collection, Arkansas, 1950s-1960s. Item # 687.63, P25.

Four similar solid pottery standing figures, having elongated heads, each terminating in a cone. The two large example have some remaining black painted striped decoration. Strong mineral deposits on their surfaces. Intact. Together with two smaller examples, one has traces of black decoration, right leg cleanly reattached. The other example has an incised shirt. Left arm and head reattached.

Est. \$400-\$600

Closing: Wednesday, May 24th, 11:12 A.M.



**475. Nayarit & Chinesco Figures (3)**

Nayarit, Mexico.  
Ca. 100 B.C. - 250 A.D.  
5-1/4 - 7-3/4"H.

Private Nevada collection, ex. Dr. David Harner collection, Arkansas, 1950s-1960s. Item #s W38110, 1510M.

Three different pottery examples including a figure with a bulbous body with arms bent backwards. Scattered mineral deposits on the surface. Together with a seated Ixtlan del Rio figure holding a rattle in his right hand, wearing a nose ring. Orange ground with painted white geometric decoration. Left leg reattached, tip of rattle restored. Finally, a Chinesco figure having a large lower bulbous body, holding both hands on her pregnant stomach. Some remaining traces of red and black painted striped decoration, general surface erosion.

Est. \$600-\$900

Closing: Wednesday, May 24th, 11:14 A.M.



**476. Colima Head Vessels (2)**  
Colima, Mexico.  
Ca. 100 B.C. - 250 A.D.  
4-1/4"H. 6"L. 5-3/4"H. 6"L.

Private Nevada collection, ex. Dr. David Harner collection, Arkansas, 1950s-1960s. Collection #161 & no #. Exhibited at the Marjorie Barrick Museum, UNLV, 2000s.

Two different pottery head vessels, the smaller possibly depicts the wind god, having puffy cheeks and forehead, crested hairdo, rear spout. A few minor restored edge chips, minor highpoint surface wear. Together with an orangeware head vessel having a stylized ovoid bowl on top of his head. Front bowl spout repaired with restoration over the breaklines, four original pieces reattached in the underside of base.

Est. \$1,000-\$1,500

Closing: Wednesday, May 24th, 11:16 A.M.



**477. Nayarit Figures (3)**  
Nayarit, Mexico.  
Ca. 100 B.C. - 250 A.D.  
4-3/4 to 6"H.

Private Nevada collection, ex. Dr. David Harner collection, Arkansas, 1950s-1960s. Collection #s WC29; 38111W.

Including an orange-brown pottery seated figure drinking from a bowl with a long straw, wearing a wide banded headdress. Some restoration to the right arm. Together with two similar orangeware pottery seated figures, one holding his hand to his mouth, the other with both hands to his waist.

Both are intact.  
Est. \$500-\$750

Closing: Wednesday, May 24th, 11:18 A.M.



**480. Colima Bedded Figures (3)**  
Colima, Mexico.  
Ca. 100 B.C. - 250 A.D.  
3-1/4 to 5-1/4"L.

Private Nevada collection, ex. Dr. David Harner collection, Arkansas, 1950s-1960s. Collection #s 488.8; 886.35.

Three different solid pottery bedded figures, each strapped to a slab type bed, one with short legs, all with pillows under their heads. All have areas of strong mineral deposits. Two have chipped noses, otherwise all are intact.

Est. \$300-\$450

Closing: Wednesday, May 24th, 11:24 A.M.



**481. Olmecoid Head Pot & Colima Redware Olla (2)**  
Mexico.  
Ca. 1000-400 B.C. & 100 B.C. - 250 A.D.  
5-1/2"H. 8"H.

Private Nevada collection, ex. Dr. David Harner collection, Arkansas, 1950s-1960s. Collection # M197; M400. Exhibited at the Marjorie Barrick Museum, UNLV, 1990s.

Including a large redware pottery bulbous body olla having a flared rim. Some remaining black resist geometric decoration. Scattered strong mineral deposits on the surface. Rim repaired and partially restored, otherwise intact. Together with an Olmecoid pinkish-tan head vessel depicted with an open bowl on the top of head. Elongated snout as if in transformation into a jaguar, feline shape eyes. Some remaining traces of cream slip, overall scattered surface deposits. Intact, exc. cond. A rare type.

Est. \$800-\$1,200

Closing: Wednesday, May 24th, 11:26 A.M.



**478. Colima Shaman Figure Squatting on Haunches**  
Colima, Mexico.  
Ca. 100 B.C. - 250 A.D.  
9"H.

Private Nevada collection, ex. Dr. David Harner collection, Arkansas, 1950s-1960s. Collection # C43. Exhibited at the Marjorie Barrick Museum, UNLV, 2000s.

Heavy gray-brown pottery figure squatting on his haunches with arms crosses and hands to the opposite shoulders. Pecked eyes and mouth, relief nose and squared, perforated ears. Intact and with good surface deposits.

Est. \$700-\$1,000

Closing: Wednesday, May 24th, 11:20 A.M.



**479. Pihuamo Figure & Colima Figure (2)**  
Colima, Mexico.  
Ca. 100 B.C.-250 A.D.  
6"H. & 6-1/4"H.

Private Nevada collection, ex. Dr. David Harner collection, Arkansas, 1950s-1960s. Collection # 84 and no #.

Including a Pihuamo redware pottery vessel depicting a rotund female figure having tiny arms and feet; rimmed opening on top of her head. Strong root marks on the surface. Together with a red-brown pottery standing figure, holding both hands on his waist. Head jutting forward, open mouth, possibly a singer. Right arm reattached, light surface weathering.

Est. \$400-\$600

Closing: Wednesday, May 24th, 11:22 A.M.



**482. West Coast Standing & Seated Figures (5)**  
Nayarit, Colima & Jalisco, Mexico.  
Ca. 100 B.C.-250 A.D.  
5-1/8"H. to 7"H.

Private Nevada collection, ex. Dr. David Harner collection, Arkansas, 1950s-1960s. Item #s 82.11, WM373, V-19, LL.2 & no#.

Group of five different pottery figures including an Archaic Colima seated figure wearing a long poncho. Intact. A seated Jalisco male figure with hands resting on his raised knees, painted red-brown highlights on a cream surface. Intact. A redware Colima standing figure wearing a wide brimmed hat, minor flake on brim, otherwise intact. An orangeware Nayarit standing figure with hands held to stomach. Finally, a Colima buff pottery seated figure, hands on his feet. Minor stable hairline in right shoulder, otherwise intact.

Est. \$600-\$900

Closing: Wednesday, May 24th, 11:28 A.M.



**483. Pre-Classic Chinesco Seated Figures (2)**  
Nayarit, Mexico.  
Ca. 100 B.C.  
2-1/4"H. & 4"H.

Collection of Albert J. and Monique Grant, NYC., acquired 1950s-1960s. Two solid pottery examples, one depicted reclining on a long bench. Right leg reattached, otherwise intact. Together with a seated figure, both hands resting on his raised knees. Intact. Both have overall strong mineral deposits on their surfaces.

Est. \$1,000-\$1,500

Closing: Wednesday, May 24th, 11:30 A.M.



**484. Colima Seated Figures (3)**

Colima, Mexico.  
Ca. 100 B.C. - 250 A.D.  
2-3/4 - 3-1/4"H.

Private Nevada collection, ex. Dr. David Harner collection, Arkansas, 1950s-1960s. Collection #BH.03.379; BH.03.378; BH.03.377.  
Three similar solid pottery seated figures, all with folded arms resting on their raised knees. All wearing headbands with applied peyote buds. Some scattered remaining traces of white slip, weathered surfaces, otherwise intact.

**Est. \$500-\$800**

**Closing: Wednesday, May 24th, 11:32 A.M.**



**485. Jalisco Seated Figure & Dog (2)**

Jalisco, Mexico.  
Ca. 100 B.C.-250 A.D.  
3"H. & 6-1/4"H.

Private Nevada collection, ex. Dr. David Harner collection, Arkansas, 1950s-1960s. Exhibited at the Marjorie Barrick Museum, UNLV, 1990s. Including a pottery seated hunchback figure, holding both hands on his feet, wearing a crisscrossed textured headband and disc ear ornaments. Tan head with some remaining black highlights, red and tan painted body. Intact. Together with a small tan-brown pottery seated dog having a few scattered surface chips, otherwise intact.

**Est. \$500-\$750**

**Closing: Wednesday, May 24th, 11:34 A.M.**



**488. Colima Flat Standing Figures (4)**

Colima, Mexico.  
Ca. 100 B.C. - 250 A.D.  
5-3/4" to 6H."

Private Nevada collection, ex. Dr. David Harner collection, Arkansas, 1950s-1960s. Collection #LL.85.  
Four solid pottery standing male figures, each wearing an unusual type of loincloth having a long rear flap in the back extending partially between their legs, one with a tasseled belt. All have mineral deposits on their surfaces. One has a reattached right arm, otherwise all others are intact.

**Est. \$300-\$600**

**Closing: Wednesday, May 24th, 11:40 A.M.**



**489. Colima Cone Head Flat Figures (3)**

Colima, Mexico.  
Ca. 100 B.C. - 250 A.D.  
6-1/2" to 7"L.

Private Nevada collection, ex. Dr. David Harner collection, Arkansas, 1950s-1960s. Collection #80.9; 94A.92; 5.3.  
Three similar solid pottery standing cone head type flat figures, having perforated ears, one wearing a simple applied necklace and one wearing a loincloth. All have strong surface and mineral deposits. All are intact.

**Est. \$300-\$600**

**Closing: Wednesday, May 24th, 11:42 A.M.**



**486. Colima Flats (3)**

Colima, Mexico.  
Ca. 100 B.C. - 250 A.D.  
8"L.

Private Nevada collection, ex. Dr. David Harner collection, Arkansas, 1950s-1960s. Collection #F115; F117.  
Three solid pottery standing flat figures, including two very similar examples, one having a decorated headdress, both wearing applied single strand necklaces. Some remaining black painted decoration. Strong mineral deposits on their surfaces. Together with a standing male figure, wearing a horned headdress, having incised linear striations in the center of his chest. A nice example. All are intact.

**Est. \$300-\$600**

**Closing: Wednesday, May 24th, 11:36 A.M.**



**487. Colima Large Flat Figures (2)**

Colima, Mexico.  
Ca. 100 B.C. - 250 A.D.  
9-1/4 - 9-3/4"L.

Private Nevada collection, ex. Dr. David Harner collection, Arkansas, 1950s-1960s. Collection #BH.03.402; 0988.30.  
Two solid pottery, large standing figures, each having elongated cone heads, one wearing a fancy feathered headdress with central shamans horn, both have beaded necklaces. The example wearing the fancy headdress is intact. The other example has the tip of the head reattached, otherwise intact.

**Est. \$300-\$600**

**Closing: Wednesday, May 24th, 11:38 A.M.**



**490. Colima Flat Figures (3)**

Colima, Mexico.  
Ca. 100 B.C. - 250 A.D.  
7-1/2 - 9-1/2"L.

Private Nevada collection, ex. Dr. David Harner collection, Arkansas, 1950s-1960s. Collection #9.88.27.  
Three solid pottery standing figures including a female holding a jug on her right shoulder. Repaired break at waist and restoration to the jar. Next, a large female having applied shoulder nodes and some remaining traces of ocher painted body stripes. Head reattached with restoration over the breaklines. Finally, an example wearing a fancy loincloth with side tassels. Intact.

**Est. \$300-\$600**

**Closing: Wednesday, May 24th, 11:44 A.M.**



**491. Colima & Nayarit Figures (2)**

West coast, Mexico.  
Ca. 100 B.C. - 250 A.D.  
7-1/2"H. & 8"H.

Private Nevada collection, ex. Dr. David Harner collection, Arkansas, 1950s-1960s. Collection #M135; WC156. Exhibited at the Marjorie Barrick Museum, UNLV, 2000s.  
Including a buff-pink color solid pottery seated figure, legs crossed, holding a knife in his right hand, left hand resting on knee. Wearing a triple strand beaded necklace and fancy headband with a horn on left. Large open ears with small disc ear ornaments, noded shoulders. Left arm mostly restored, otherwise intact. Together with a standing Nayarit figure, wearing an ankle length skirt, hands raised to shoulder level. Wearing a wide brimmed headdress and pendant necklace. Painted white striped skirt with a dot pattern on a cream and red-brown ground. Repaired break in body and some repair to the headdress.

**Est. \$300-\$600**

**Closing: Wednesday, May 24th, 11:46 A.M.**



**492. Colima Small Figures (5)**

Colima, Mexico.  
Ca. 100 B.C. - 250 A.D.  
4 - 6"L.

Private Nevada collection, ex. Dr. David Harner collection, Arkansas, 1950s-1960s. Collection #94B.33; F102, 81.49; 81.41; 80.18. Five solid pottery figures including four standing and one seated example. Three have elongated cone heads. One having a small chip on the tip of his head, otherwise all three are intact. Together with a male and female figure, the male is wearing a fancy headdress. Painted red-brown surface with black details. Some surface losses on the left front. The female holds both hands too her chest. Intact.

Est. \$300-\$600

Closing: Wednesday, May 24th, 11:48 A.M.



**493. Veracruz Sonriente Head**

Veracruz, Mexico.  
Ca. 600-900 A.D.  
5-1/2"H.

Estate of Hannelore Schulhof, collection of Rudolph B. and Hannelore B. Schulhof, Kings Point, NY, 1950s-1970s.

Natural buff-brown hollow pottery molded head, originally from a figure. Wearing a headdress decorated with a spiral and fringed bar decoration. Wearing large ear spools. Expressive facial features, smiling and having a slightly open toothy mouth. Intact, exc. cond. Custom lucite block base.

Est. \$600-\$900

Closing: Wednesday, May 24th, 11:50 A.M.



**496. Colima Flat Figures (10)**

Colima, Mexico.  
Ca. 100 B.C. - 250 A.D.  
4" to 5"H.

Private Nevada collection, ex. Dr. David Harner collection, Arkansas, 1950s-1960s. Collection #s 83.15; 83.27; 83.10; 9.88.31; P24; 94C.41; 886.10; 83.8; 886.28.

Ten pottery standing figures including eight similar examples, all holding their hands to their stomachs or chests, wearing applied necklaces and loincloths with side tassels, incised linear decoration. One having a restored right arm and one other repaired with some restoration, remaining six are intact. Two remaining figures, one holding hand to chin, intact. The other holding both hands to neck, minor loss to tip of nose, otherwise intact.

Est. \$1,000-\$1,500

Closing: Wednesday, May 24th, 11:56 A.M.



**497. Archaic Colima Figures (12)**

Colima, Mexico.  
Ca. 100 B.C. - 250 A.D.  
3-3/4 to 4-1/2"H.

Private Nevada collection, ex. Dr. David Harner collection, Arkansas, 1950s-1960s. Collection #s 91.60; A.88.10; 94B.4; 9.88.14; 80.6; 886.20; 9.88.12; 9.88.13; 5.14; 488.18.

Group of twelve similar solid pottery standing figures, most having elongated cone type heads and perforated ear lobes. Two depicted wearing knee length skirts. Scattered mineral deposits on their surfaces. One example has a reattached arm, otherwise all others are intact.

Est. \$1,200-\$1,800

Closing: Wednesday, May 24th, 11:58 A.M.



**494. Nayarit Female Figure**

San Sebastian, Nayarit, Mexico.  
Ca. 100 B.C. - 250 A.D.  
8-1/8"H.

Ex. Collection of Dr. Herbert J. Kayden and Dr. Gabrielle Reem Kayden, acquired 1960s - 1970s.

Orangeware pottery standing female figure having some remaining resist striped decoration on her stomach, holding both hands on her stomach. Depicted with an elongated mushrooming head, wearing ear ornaments and a simple necklace. Strong scattered mineral deposits on the surface.

Right leg reattached with breakline visible, otherwise intact.

Est. \$300-\$500

Closing: Wednesday, May 24th, 11:52 A.M.



**495. Nicoya Crouching Frog Vessel**

Costa Rica.  
Ca. 900-1000 A.D.  
7-1/4"H.

Private Chester, NY collection, acquired by descent, 1960s. Natural buff-brown pottery crouching frog vessel depicted with large round applied eyes. Large collar rim opening in the top of his head. Both front legs reattached, rear feet partially restored, three small rim chips, otherwise intact.

Est. \$400-\$600

Closing: Wednesday, May 24th, 11:54 A.M.



**498. Nayarit Olla with Anthropomorphic Face**

Nayarit, Mexico.  
Ca. 100 B.C.-250 A.D.  
5-3/4"H.

Private southwestern collection, acquired from The Museum of American Indian, shop, 1970.

Pottery olla having a flared rim mouth decorated with a simple tab form, stylized human face above the rim. Upper portion of the vessel painted red-brown with white bands and three geometric elements, possibly depicting stylized birds. Overall scattered mineral deposits on the surface.

Intact, exc. cond.

Est. \$200-\$400

Closing: Wednesday, May 24th, 12:00 Noon



**499. Seated Nayarit & Jalisco Figures (2)**

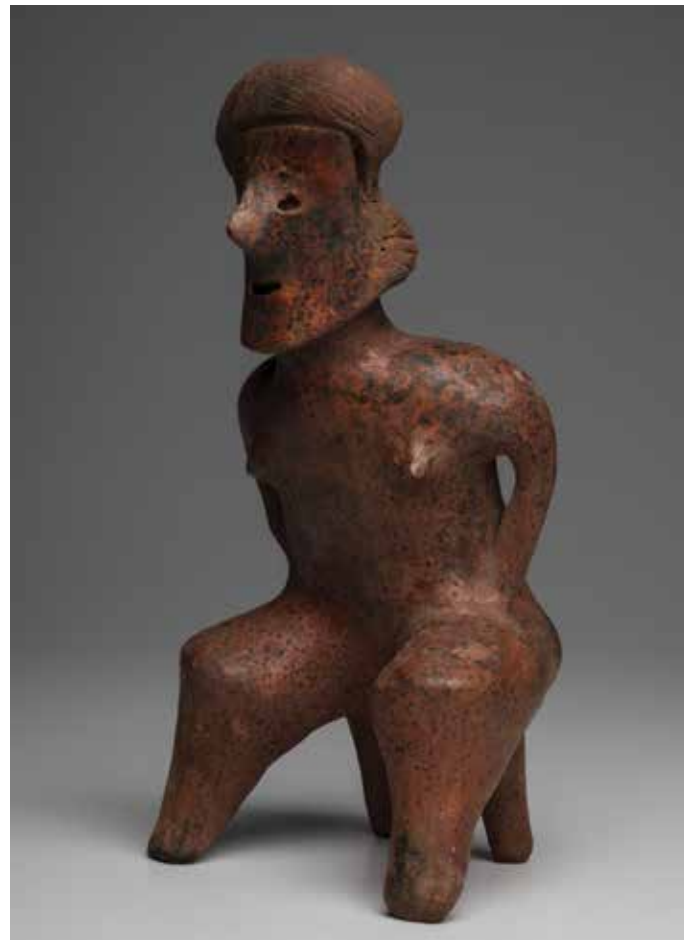
West Coast, Mexico.  
Ca. 100 B.C.-250 A.D.  
7-1/2"H. & 8-1/2"H.

Ex. John Bryson collection, Time-Life photojournalist, collected 1950s - early 70s.

Two different solid pottery seated figures including a slightly larger Nayarit figure holding his left hand on his raised knee and right hand to his chest. Some remaining white painted striped details. Strong mineral deposits on the surface. Intact. Together with a Jalisco seated female holding a small bowl on her right shoulder, left hand on stomach. Poorly repaired from five original pieces, with loss to the back of neck, head and mid-front skirt.

Est. \$700-\$1,000

Closing: Wednesday, May 24th, 12:02 P.M.



**500. Nayarit Seated Figure**

San Sebastian, Nayarit, Mexico. Ca. 100 B.C. - 250 A.D. 11-1/4"H.  
 Ex. collection of Mr. and Mrs. Gary Cooper, Movie Star, by descent to their daughter.  
 Acquired 1950s from Alfred Stendahl, LA.  
 Orangeware pottery seated female figure, holding her hands to her waist, small pointed breasts, striated hairdo. Impressed simple facial features, pointed nose. Over all strong mineral deposits on the surface. Repaired from approximately five original pieces, some breaklines restored, minor scattered surface losses.  
**Est. \$600-\$900**

**Closing: Wednesday, May 24th, 12:04 P.M.**



**502. Nazca Decorated Bowl**

Nazca.  
 Ca. 400-600 A.D.  
 9-1/4"D.  
 Ex. Collection of Dr. Herbert J. Kayden and Dr. Gabrielle Reem Kayden, acquired 1960s - 70s.  
 Large flared rim, polychrome decorated, pottery bowl having a wide exterior band containing three highly stylized mythological deities. Some general color fading, otherwise intact. Early penned collection information on base.  
**Est. \$750-\$1,000**

**Closing: Wednesday, May 24th, 12:08 P.M.**



**501. Taino Hard Stone Celts (3)**

Hispaniola.  
 Ca. 800-1500 A.D.  
 3-1/2 to 4-1/4"L.  
 Private Washington, DC. collection, acquired from Arte Primitivo Gallery, early 1990s.  
 Three hardstone Arawac-Taino petaloid celts, including a greenish-brown and a gray-green example. Both are intact, exc. cond. Together with a more elliptical example in bluish-green speckled hard stone. Minor blade edge roughness, otherwise intact.  
**Est. \$400-\$600**

**Closing: Wednesday, May 24th, 12:06 P.M.**



**503. Chancay Whistling Bird Vessel**

Ca. 1000-1250 A.D.  
 10-1/4"H. x 8"L.  
 Private Nevada collection, acquired from Foreign Unlimited, Coconut Grove, FL. 1970s. Ex. Charles E. Warren collection, item # 38118FU. Exhibited at the Marjorie Barrick Museum, UNLV, 1990s.  
 Pottery double globular vessel having a tall tapered rear spout and a strap bridge handle. Large bird perched on the top front glob, painted with black details on a cream slip ground. Repaired from approximately eight original pieces with restoration over the breaklines, scattered black paint loss on the bird.  
**Est. \$600-\$900**

**Closing: Wednesday, May 24th, 12:10 P.M.**



**504. Chimu/Inca Silver Bowl**

Ca. 1000-1425 A.D.  
 2-1/4"H. 5-1/2"D.  
 Ex. Jack Bregman collection, acquired early 1970s.  
 By descent to current owner.  
 Silver bowl decorated with six repousse felines around the upper rim. Heavy overall blue-green surface patina, mostly on the exterior, with scattered areas on the interior. Intact.  
**Est. \$600-\$900**

**Closing: Wednesday, May 24th, 12:12 P.M.**



**506. Inca & Nazca Vessels (3)**

Ca. 200-600 A.D. & 800-1425 A.D.  
 8"H. 5-1/2"H. 5"H.  
 Estate of Hannelore Schulhof, collection of Rudolph B. and Hannelore B. Schulhof, Kings Point, NY, 1950s-1970s.  
 Three different vessels including a Nazca polychrome round bottomed deep bowl having a wide mauve exterior band decorated with three rows of circular linked bands. A small area of minor surface pocking, otherwise intact. Together with an Inca vessel having a bulbous body and squared stirrup type vessel, with perforated lug. Painted cream body bands on an orange ground, some faded black resist geometric decoration. Some minor spout rim roughness and a tiny drilled hole in the center of the body, otherwise intact. Finally, a late Moche stylized frog vessel having a wide cylindrical rear spout and strap handle. Painted cream with orange-brown stripes. Intact.  
**Est. \$500-\$1,000**

**Closing: Wednesday, May 24th, 12:16 P.M.**



**505. Large Ica-Huari Pottery Bowl**

Ica.  
 Ca. 600-800 A.D.  
 10-1/2"D., 5"H.  
 Private NYC collection, acquired from California Auctioneers.  
 Large red-orange pottery bowl, decorated on the exterior with a wide band depicting four large semiabstract spiny tailed creatures. Stable hair-line from the rim and a small rim chip, otherwise intact.  
**Est. \$500-\$800**

**Closing: Wednesday, May 24th, 12:14 P.M.**



**507. Chancay Pottery Vessels (2)**

Ca. 1000-1250 A.D.  
 7-3/4"H. 5"H.  
 Estate of Hannelore Schulhof, collection of Rudolph B. and Hannelore B. Schulhof, Kings Point, NY, 1950s-1970s.  
 Including a chocolate on white painted pottery double tiered bulbous vessel with twin opposing loop handles. Overall painted geometric and linear decoration with two small stylized birds or frogs in the upper center. Ancient rim chip and some scattered paint loss, otherwise intact. Together with a thick walled pottery vessel having opposing loop handles. Some remaining traces of simple abstract painted standing figures. An area of restored upper rim roughness, otherwise intact.  
**Est. \$400-\$800**

**Closing: Wednesday, May 24th, 12:18 P.M.**



**508. Taino Flint Spear Blades (2)**  
Dominican Republic.  
Ca. 500-1200 A.D.  
8"L. & 9"L.

Private NJ collection, acquired from Dan Purcara, NYC.  
Two large cream color flint spear or knife blades, each having knapped blade edges and a raised center ridge. Ancient surface patina with scattered light deposits. The slightly smaller example has a very minor underside edge flake, otherwise intact, exc. cond. The larger example has an ancient underside edge chip and missing blade tip, otherwise intact.

**Est. \$600-\$900**  
**Closing: Wednesday, May 24th, 12:20 P.M.**



**510. Danish Flint Crescentic Knives (2)**  
Northern Europe.  
Ca. 6000-3500 B.C.  
5"L. 7-1/2"L.

Private NYC collection, acquired 1970s-1980s.  
Two very fine examples in different sizes, but of similarly colored brownish gray flint. Each bears a keen pressure flaked edge on both straight and curved blades. Both intact and lovely.

**Est. \$1,000-\$1,500**  
**Closing: Wednesday, May 24th, 12:24 P.M.**



**509. Chancay Textile with Embroidered Birds**  
Chancay.  
Ca. 900-1300 A.D.  
45" x 59-1/2"

Private Canadian collection, ex. Sothebys, NYC.  
Large woven textile panel having ten vertical and six horizontal rows of alternating embroidered boxes decorated with large red, yellow and brown birds and a repeating geometric pattern. Several small holes and tattering, in need of professional conservation. Sewn on a cotton textile backing.

**Est. \$1,200-\$1,500**  
**Closing: Wednesday, May 24th, 12:22 P.M.**



**511. Middle Eastern Oil Lamps (3)**  
Middle East, Roman  
Ca. 2nd - 3rd century A.D.  
3 - 4"L.

Private NYC collection, acquired 1970s-1980s.  
All are decorated, the two smaller with Christogram on the discus, larger of the two with tree of life on underside and two other symbols. Minor chips but intact largest has tree of life design on discus, some loss and some gluing.

**Est. \$300-\$450**  
**Closing: Wednesday, May 24th, 12:26 P.M.**



**512. Stone Man with Exaggerated Phallus**  
Egypt.  
Late period, ca. 700-30 B.C.  
2-3/8"L., 1-1/2"H.

Ex. Leon Zakian collection, NYC., acquired pre-1974.  
Carved dark gray stone seated male figure holding a disc shape drum with both hands and having an exaggerated penis. Overall calcified surface patina. Ancient loss to the underside of integral base, otherwise intact.

**Est. \$500-\$800**  
**Closing: Wednesday, May 24th, 12:28 P.M.**



**514. Bronze Osiris Figure & Two Ushabtis (3)**  
Egypt.  
Late period, ca. 700-30 B.C.  
4-1/4", 4" & 1-3/4"H.

Ex. estate collection of Nourollah Elghanayan, NYC., acquired 1960s - 70s.  
Including a solid cast bronze Osiris figure wearing the double feathered headdress and royal beard, holding implements in both hands. Overall blue-green surface patina. Intact. Together with a blue-green faience ushabti. Repaired break through the knees, lost to the right side of head, various glaze chips and losses. Finally, a tiny molded ushabti with traces of blue glaze. General highpoint wear.

**Est. \$700-\$1,000**  
**Closing: Wednesday, May 24th, 12:32 P.M.**



**513. Group of Egyptian Steatite Scarabs (2)**  
Egypt.  
Ca. 1000-30 B.C.  
1/2" to 5/8"L.

Ex. Leon Zakian collection, NYC., acquired pre-1974.  
Group of five different steatite scarabs all having various hieroglyphic inscriptions on the reverse. One blue-green glazed scarab has a chip on the underside. One white steatite example has a flat loss on the top. The three remaining scarabs have light weathering, overall exc. cond.

**Est. \$500-\$800**  
**Closing: Wednesday, May 24th, 12:30 P.M.**



**515. Roman-Egyptian Heads (20)**  
Roman-Egypt.  
Ca. 300-30 B.C.  
1" - 3"L.

Private NYC collection, acquired from Alex G. Malloy, South Salem, NY., 1970s.  
Including a torso wearing a drapery garment, depicted putting his hand in a jug and wearing a bag on his waist. Together with nineteen terracotta heads and partial heads originally from figures, several depicting various deities and gods. All with surface weathering and imperfections.

**Est. \$600-\$900**  
**Closing: Wednesday, May 24th, 12:34 P.M.**



**516. Middle Eastern Oil Lamps (5)**

Middle East, Roman.  
Ca. 2nd - 4th century A.D.  
3-1/2 - 5"L.

Private NYC collection, acquired 1970s-1980s. All are low to non fired pottery lamps showing wear and use, and having ornate designs in low relief. All are intact, although there are minor losses and chips.

**Est. \$300-\$450**

**Closing: Wednesday, May 24th, 12:36 P.M.**



**517. Roman And Middle Eastern Oil Lamps (9)**

Middle East, Roman.  
Ca. 2nd - 4th century A.D.  
3 - 5"L.

Private NYC collection, acquired 1970s-1980s. A group of various types from Herodian to late Roman. All of low fired pottery. Largest with seven wick holes, missing handle and tip reglued. A Roman lamp with relief figure on discus, worn. All are intact and show use and wear.

**Est. \$300-\$450**

**Closing: Wednesday, May 24th, 12:38 P.M.**



**520. Damaged Ancient Glass Items (12)**

Roman and Islamic.  
Ca. 200-800 A.D.  
1-1/2 - 5-1/2"L.

Private NYC collection, acquired 1970s-1980s. ex. SPB, part of lot 19 (large blue piece), H, part of lot 104 (4 short pieces). Highlights include: a feeding vessel with long, slender spout. Fiery iridescence, but numerous repairs; a cobalt blue jar with wide mouth and pinched body. Numerous repairs and loose pieces included; a blue glass bottle, also with brilliant iridescence and repairs; a green glass spout; a small pale citrine glass dish; three small bottles, one with swirl design; and four small Islamic bottles, three with square bodies, the fourth is cylindrical.

**Est. \$300-\$450**

**Closing: Wednesday, May 24th, 12:44 P.M.**



**521. Lekythos, Lamp & Iron Age Jar (3)**

Greece and Middle East.  
Ca. 1000 B.C. - 200 A.D.  
7-1/8"H., 5-1/4"H. & 3-5/8"L.

Ex. Private Florida collection, acquired by descent from husband, acquired from his mother. Purchased about 100 years ago, for the lamp and dipper. Lekythos received as a gift in 1989 from Johannes Alfred Hering, Germany.

Including a Greek red-figure lekythos decorated with an enthroned female figure. Upper portion of neck and disc foot reattached with visible break-lines, general surface erosion and losses to decoration. Together with a red-brown pottery oil lamp, decorated in relief with a nude male dancer. Top portion of lamp reattached, otherwise intact. Finally, a Holyland red-brown pottery juglet having an applied handle and pinched pouring lip. Scattered areas of surface encrustation, intact.

**Est. \$500-\$800**

**Closing: Wednesday, May 24th, 12:46 P.M.**



**518. Roman And Middle Eastern Oil Lamps (6)**

Middle East, Roman.  
3 - 3-1/2"L.

Private NYC collection, acquired 1970s-1980s. One round type, three of standard form, one of which with a relief cross on the discus. Also two Herodian type. All are intact.

**Est. \$300-\$450**

**Closing: Wednesday, May 24th, 12:40 P.M.**



**519. Roman Glass Bottles (2)**

Eastern Mediterranean.  
Ca. 1st to 2nd century A.D.  
4-1/2"H. 5-1/2"H.

Ex. Christies, London, 1990s. #s 35; 52. Including a candlestick type bottle having a squat bulbous body and long neck with flat rolled lip. Overall iridescence surface patina. A small hole in the side of the body, otherwise intact. Together with a light blue-green glass bottle having a bulbous body, wide neck and outwardly rolled lip. Overall iridescence surface patina. Intact.

**Est. \$350-\$525**

**Closing: Wednesday, May 24th, 12:42 P.M.**



**522. Nine Scythian Bronze Points & 3 Roman Bronze Coins (12)**

Central Asia and Middle East.  
Ca. 1st millennium B.C. to 2nd century A.D.  
1/2" - 1-1/2"L.

Ex. collection of Vincent Funicello, Brooklyn, NY., 1930s - 70s. Including nine mostly similar bronze arrow points. Together with three different Roman bronze coins. The smallest coin has some denting, all exhibit wear.

**Est. \$300-\$500**

**Closing: Wednesday, May 24th, 12:48 P.M.**



**523. English Limestone Male Head**

England.  
Ca. 13th century.  
5-1/2"H.

Ex. Yolande Betbeze Fox collection, (Ms. America 1951), acquired 1950s. Small carved limestone head of a youthful male, having a short cropped curly hairdo, shirt indicated around his neck. Some remaining black painted highlights and hairdo. A few minor surface flakes, otherwise intact.

**Est. \$700-\$1,000**

**Closing: Wednesday, May 24th, 12:50 P.M.**



**524. Eskimo Model Kayak**  
Eskimo.  
Ca. late 19th century.  
17-1/8"L.

Collection of Judith E. Hilburg, Vallejo, CA.  
Model kayak, bent wood frame covered with a seal skin covering, carved ivory prow knob and nailed bent ivory under prow edging. Missing one ivory prow strip and one tip, exhibits age and use.  
**Est. \$700-\$1,000**  
**Closing: Wednesday, May 24th, 12:52 P.M.**



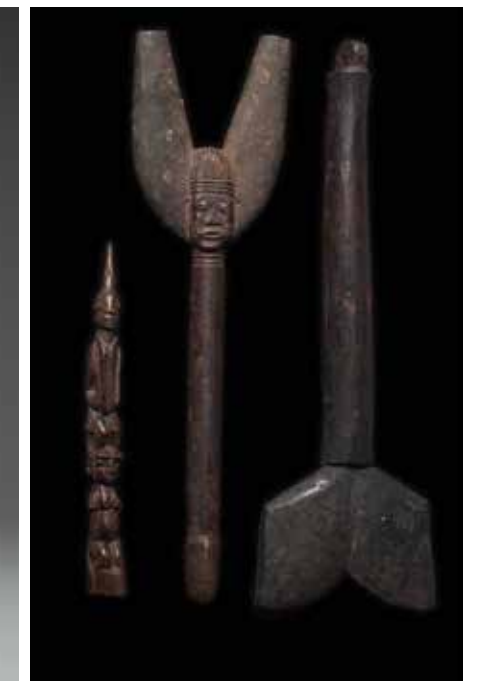
**525. Fiber Mask**  
Ivory Coast.  
13"H.

The Allan Stone Collection, acquired 1960s - 1980s.  
Possibly We-Guere cylindrical woven rattan mask with tubular eyes, attached carved wood nose, and thick human beard attachment woven to lower half of face. Trade cloth rim cushion still intact.  
**Est. \$800-\$1,200**  
**Closing: Wednesday, May 24th, 12:54 P.M.**



**528. Detailed Mossi Helmet with Horns**  
Burkina Faso.  
7-3/4"H., 15-1/4"L.

Ex. Marshall Mount collection. Gifted to his son Christopher.  
Finely carved hemispherical helmet of an antelope with long pointed snout, attached to horns curving over helmet and tapered crest in between. Entire surface incised with geometric patterns, and traces of brown and white kaolin pigment. One pointed ear lost, other reattached.  
Thick encrusted deposits.  
**Est. \$800-\$1,200**  
**Closing: Wednesday, May 24th, 1:00 P.M.**



**529. Dance Wands & Finial (3)**  
Nigeria.  
7-3/4" to 13"L.  
Private Brussels collection.

Two Yoruba Shango dance wands, one is a plainly carved staff with bi-lobed finial, encrusted deposits and patina on finial. The other is a shorter staff with finial in form of a Janus face head with inlaid metal eyes, and projections extending from sides of head. Medium brown patina. Together with a small slender finial composed of two stacked figures, the top figure with a pointed cap. Smooth warm brown patina.  
Minor hairline crack on side.  
**Est. \$500-\$800**  
**Closing: Wednesday, May 24th, 1:02 P.M.**



**526. Hunters Pants**  
Mali.  
37"H.

Private New Jersey collection.  
Native fabric attached with covered square amulets. Amulets protected and empowered a hunter while hunting.  
**Est. \$400-\$600**  
**Closing: Wednesday, May 24th, 12:56 P.M.**



**527. Hunters Shirt**  
Mali.  
29"H.

Private New Jersey collection.  
Fabric tunic with woven attached animal horns, fabric sections, and cowry shells. Amulets and animal elements protected and empowered a hunter while hunting.  
**Est. \$400-\$600**  
**Closing: Wednesday, May 24th, 12:58 P.M.**



**530. Ziba Mask**  
Tanzania.  
Ca. 1930s  
8"H.

Dr. Charles A. Berger collection, NY.  
Acquired at PB 84, NYC, 1970s (Parke Bernet).  
Small ovoid mask with rounded bulging forehead, straight linear nose, open rectangular eyeholes, and open rectangular mough with inserted bone tooth. Raffia woven covering still attached to rim.  
Dark brown patina. One tooth lost.  
**Est. \$1,000-\$1,500**  
**Closing: Wednesday, May 24th, 1:04 P.M.**



**531. Beaded Necklace and Two (2) Cache-Sexe**  
Cameroon.  
8-1/2" diam., 8"Ht.

The Estate of Irwin and Ceci Smiley.  
Kirdi beaded aprons or cache-sexe, the pattern and detail communicate status and age, of rectangular form geometric beaded patterns, and cowry shell fringe. The larger one with bells attached to the fringe. Together with beaded collar, excellent condition.  
**Est. \$300-\$600**  
**Closing: Wednesday, May 24th, 1:06 P.M.**